



## PRODUCT SPECIFICATION

Product Name: LED Down Light

Product model: NSDL-30-65K NSDL-30-40K NSDL-30-30K

DESCRIPTION : LED Down Light(COB)



### ● Features

1. Using die-casting aluminum with good appearance for high class looking.
2. Built-in constant current driver for high efficiency and stability.
3. Adopt imported COB as light source with high light efficiency and long lifespan.
4. Quick response time, the LED response time is nanosecond.
5. Environmental protection, no heavy metals and harmful gas.
6. Energy-saving, can save energy more 80% than traditional lights.
7. No flicker, start quickly, soft light, protect your eyes.
8. Easy to install and use.

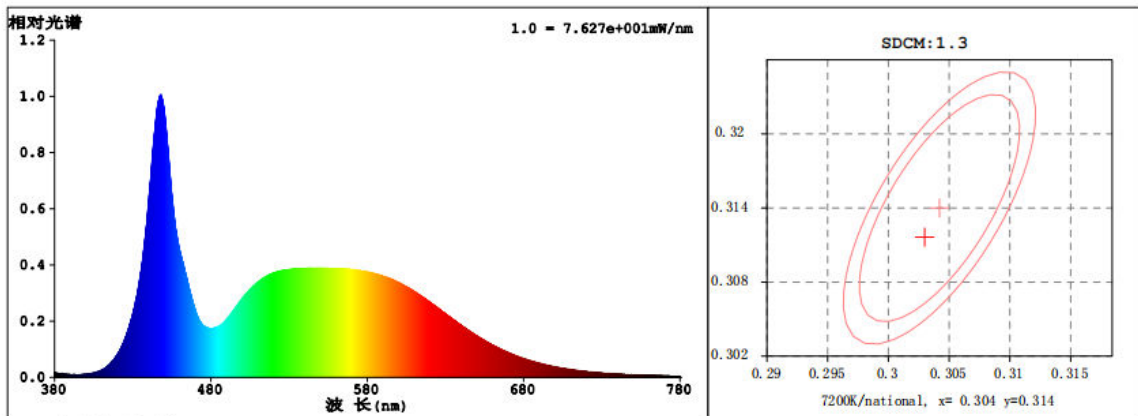
### ● Technical Parameter

Model	NSDL-30
LED model	COB 2823
LED Qty	1 PCS
Power	30W
Voltage	AC110-240 V

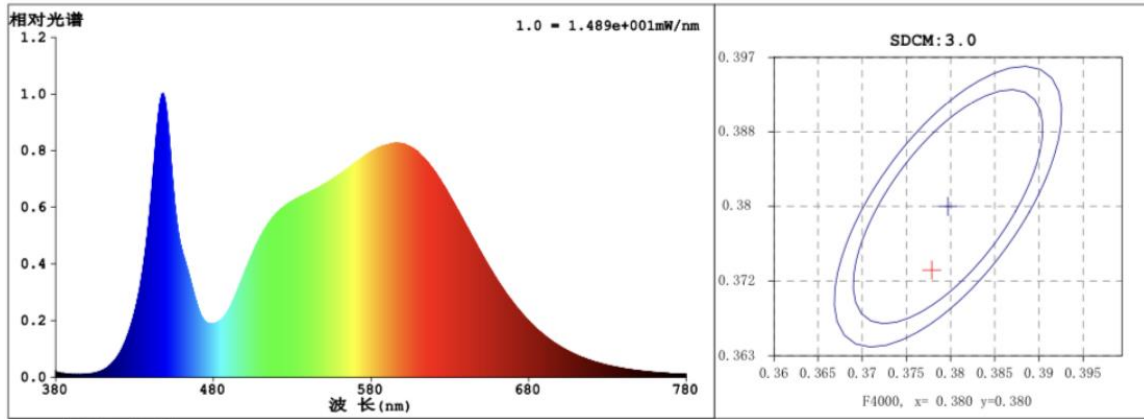
Working Frequency	50/60HZ
Power Efficiency	≥ 83%
Luminous Flux	2800LM
Efficiency	93LM/W ± 10%
Power Factor	≥ 0.9
Colour Temperature	WH : 6500K(6020-7040) NW: 4000K(3710-4260) WW: 3000K(2875-3215)
CRI	Ra ≥ 80
Bean Angle	100°
Working Temperature	-20 to + 50 °C
Service life	30,000hr life 5yr warranty

● Relative Spectral Energy Distribution

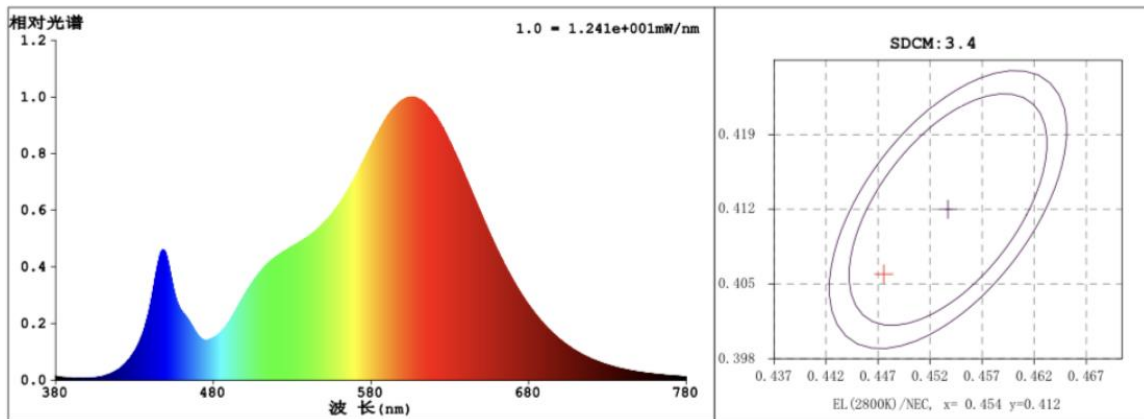
NSDL-30-65K



# NSDL-30-40K

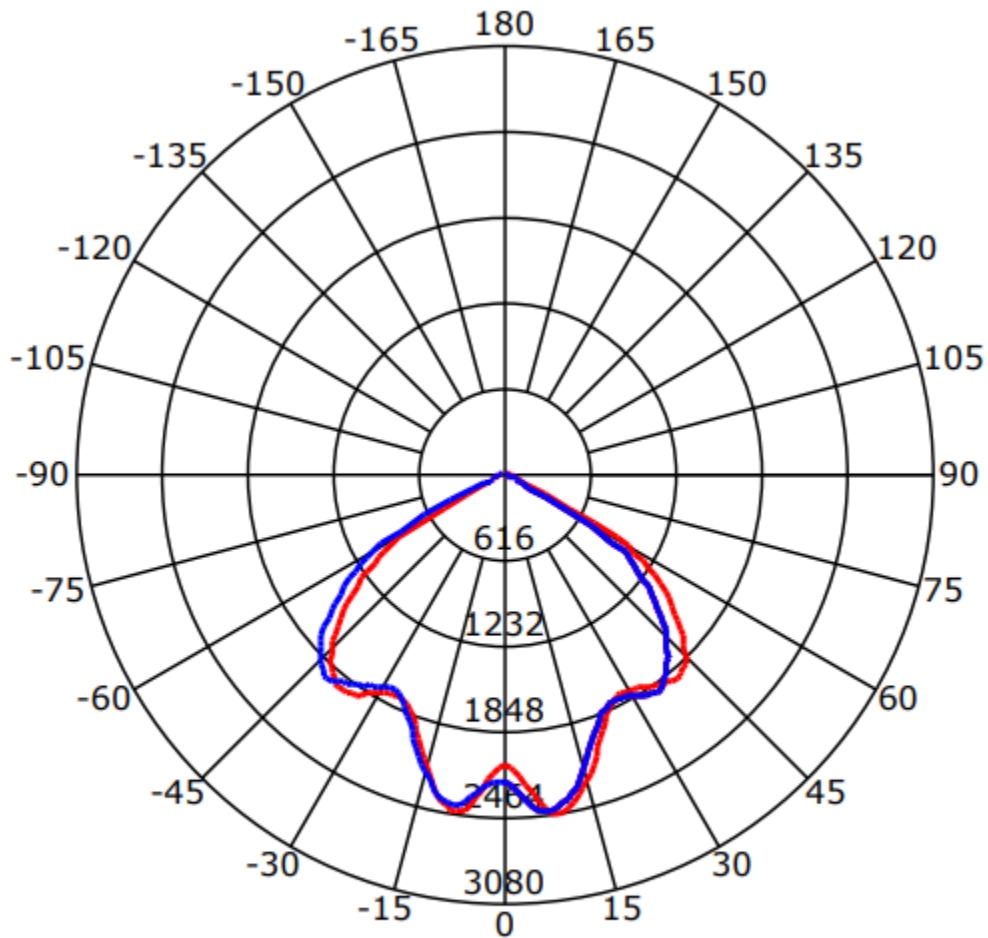


# NSDL-30-30K



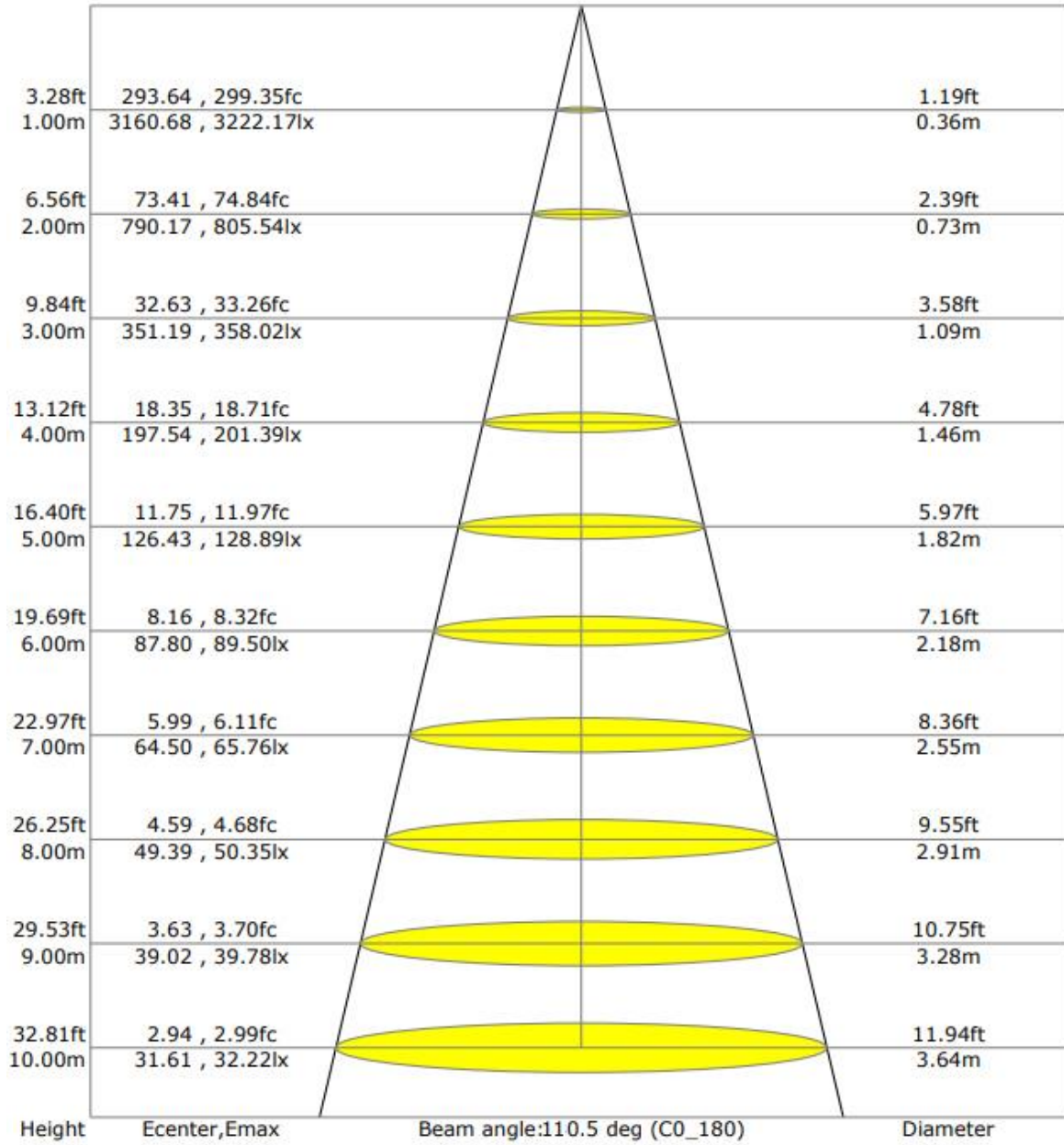
● Optical characteristic curve

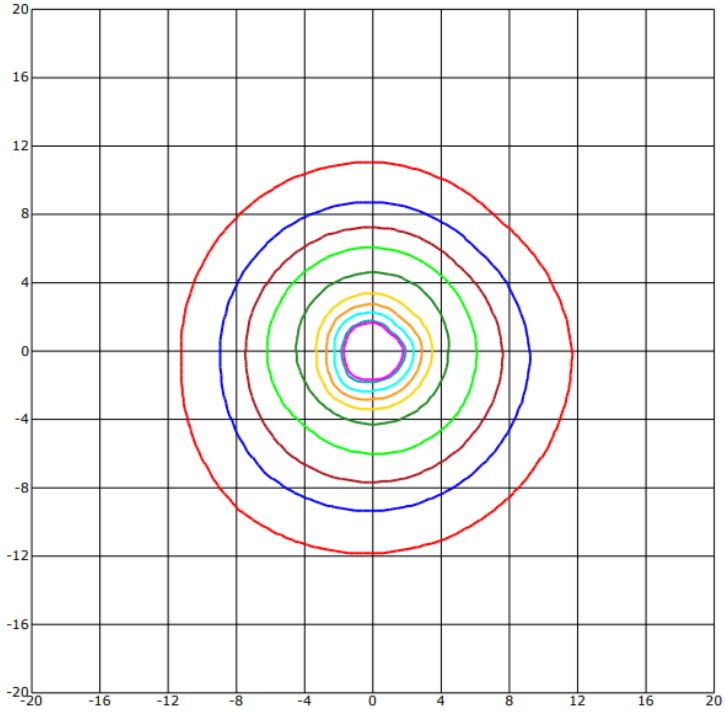
NSDL-30



光束角(50%) C0-180,C90-270: 111.5 deg,111.3 deg

C0-180 ——— C90-270 ———

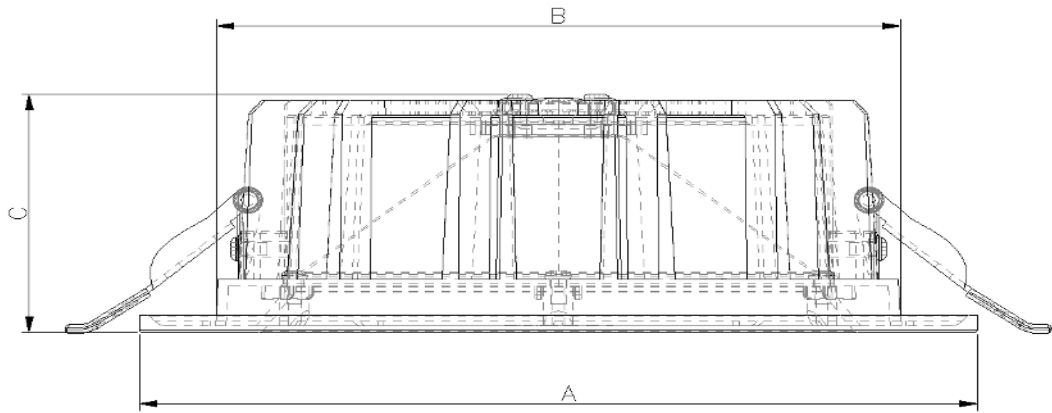




Unit of illumination:lx    Height of plane:8.0(m)/26.25(ft)

34.703(1%Emax)	18.86(1%Emax)
33.948(1%Emax)	15.088(1%Emax)
30.176(1%Emax)	11.316(0%Emax)
26.404(1%Emax)	7.544(0%Emax)
22.632(1%Emax)	3.772(0%Emax)

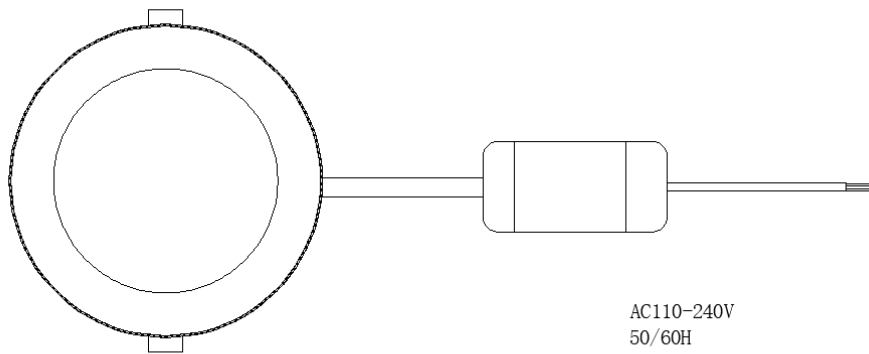
● Dimensions



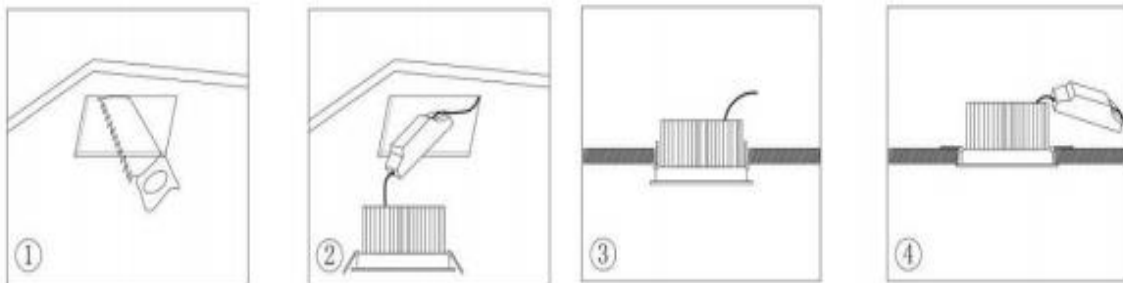
Model	Diameter (mm)	A(mm)	B(mm)	C(mm)
30W	/	225± 1	200± 1	55±1

● Instruction of wiring

1. Diagram of power supply wiring :



● Installation Instructions



1. Make a hole of the right size in the ceiling;
2. Connect power and lamp;
3. Attach the spring-loaded lamp to the ceiling;
4. Finish installation and put the power on.

● Product Package

Packed in color box,10 PCS/ case

● Product Photo



● Packing size & Pictures:

Model	L (mm)	W (mm)	H (mm)
NSDL-30-65K	240	230	60
NSDL-30-40K	240	230	60
NSDL-30-30K	240	230	60







01.02.13.071.4727

内盒/240x230x60mm/300g灰底白+A5(120g芯) E坑/四色/覆光膜/NSDL-30-40K-V1



01.02.13.071.4726

内盒/240x230x60mm/300g灰底白+A5(120g芯) E坑/四色/覆光膜/NSDL-30-30K-V1

01.02.13.041.3557 外箱/495x315x240mm/250g灰底白+535A(双120g芯) EB坑/四色/覆光膜/NSDL-30-65K-V1




### ● Warranty and After-sales Service

The period of guarantee is 5 years. Quality assurance is based on the correct storage, installation, use and maintenance of products. Due to improper installation and improper use of the product, the product is damaged beyond the scope of this warranty. During the warranty period, We will choose to repair, replace (spare parts) with new products. Labor charges or material costs will be appropriately collected over the warranty period.

### ● Products Application Cases





The date listed in this file is for reference only, and the specific date should be subject to the specific products, if any change, sorry for no notice.