



PRODUCT SPECIFICATION

Product Name: LED LINE LAMP

Product model: NSLL-10-40K/ NSLL-10-65K/ NSLL-18-40K/ NSLL-18-65K/NSLL-20-40K/NSLL-20-65K/NSLL-30-40K/NSLL-30-65K/NSLL-60-40K/NSLL-60-65K

DESCRIPTION : LED LINE LAMP (SMD2835)



● Features

1. Built-in constant current driver, high efficiency, stability
2. Using the imported SMD as light source, high light efficiency, long lifespan.
3. Quick response time, the LED response time is nanosecond.
4. Environmental protection, no heavy metals and harmful gas.
5. Energy-saving, can save energy more 80% than traditional fluorescent lights.
7. Start quickly, soft light, protect your eyes.
8. Easy to install and use.

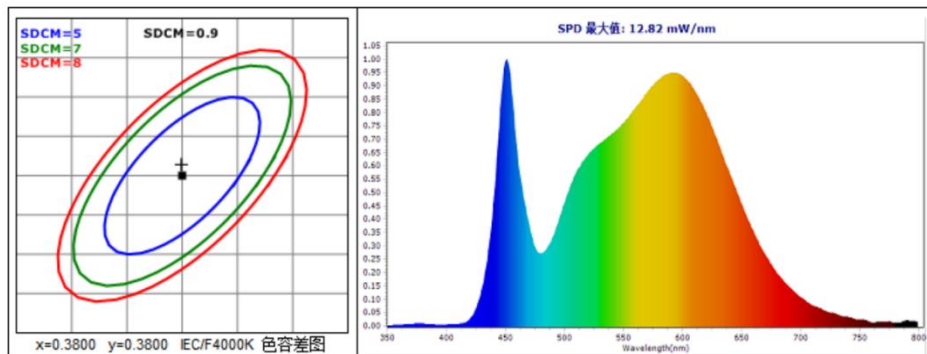
● Technical Parameter

Model	10W	18W	20W	30W	60W
LED model	2835	2835	2835	2835	2835
LED Qty	18PCS	18PCS	12PCS	12PCS	6PCS
Power	10 W	18 W	20 W	30 W	60 W

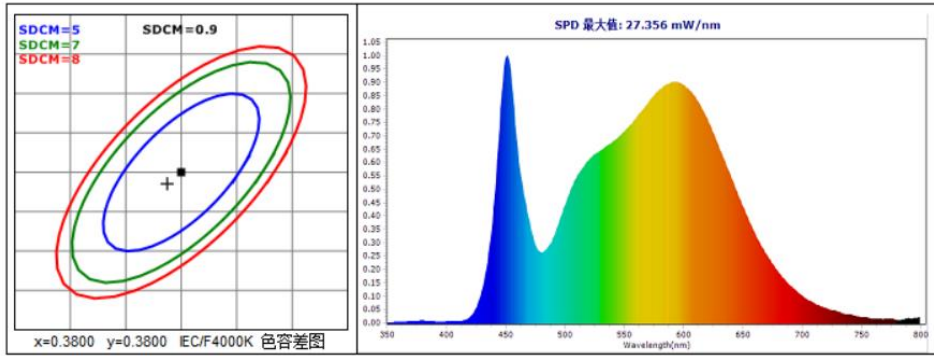
Voltage	AC110 -240 V	AC110 -240 V	AC110 -240 V	AC110 -240 V	AC110 -240 V
Working Frequency	50/60HZ	50/60HZ	50/60HZ	50/60HZ	50/60HZ
Power Efficiency	≥ 91%	≥ 92%	≥ 90%	≥ 92%	≥ 92%
Luminous Flux	700LM	1440LM	1600LM	2550LM	5400LM
Luminous efficiency	70LM/W ± 10%	80LM/W ± 10%	80LM/W ± 10%	85LM/W ± 10%	90LM/W ± 10%
Power Factor	≥ 0.9				
Colour Temperature	NW: 3710-43 60K WH: 5890-7490K				
CRI	Ra ≥ 80				
Beam Angle	120°				
Working Temperature	-20 to + 5 0 °C				
Service life	30,000hr life 5yr warranty				

● Relative Spectral Energy Distribution

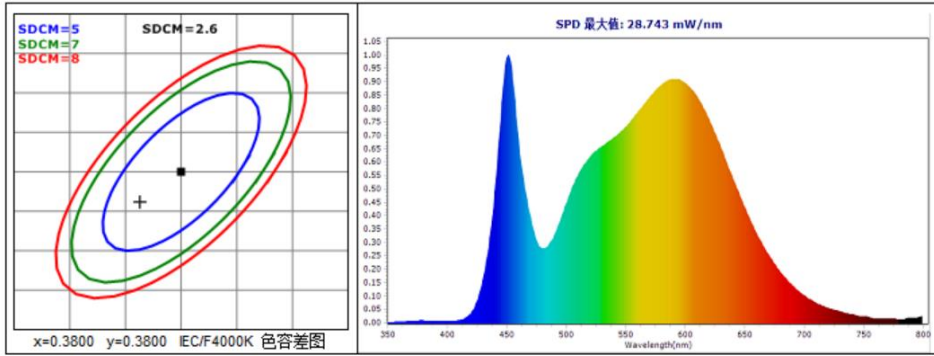
NSLL-10-40K



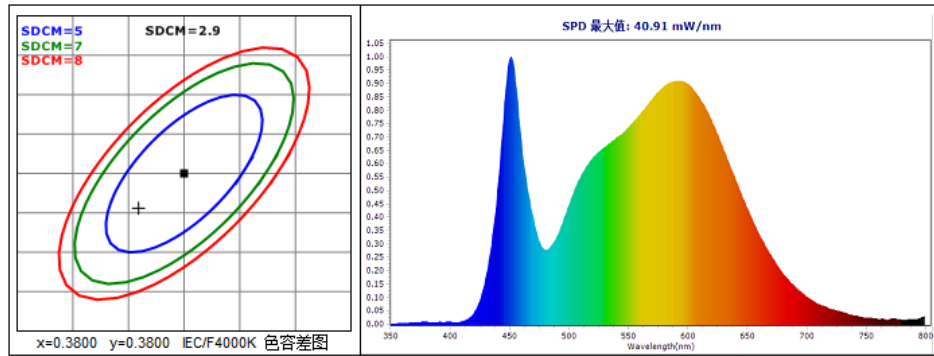
NSLL-18-40K



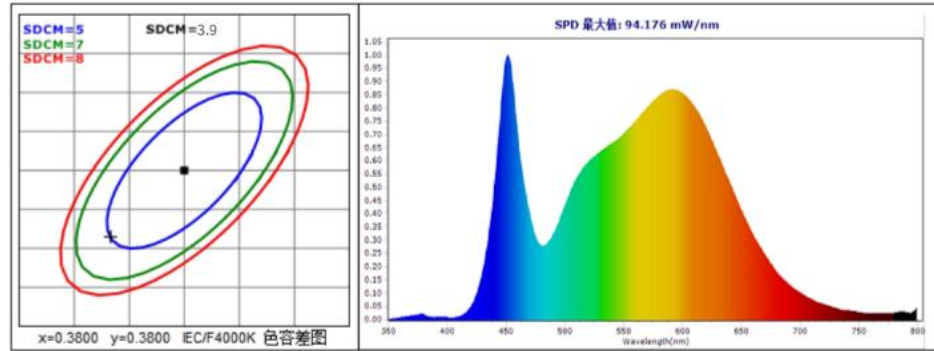
NSLL-20-40K



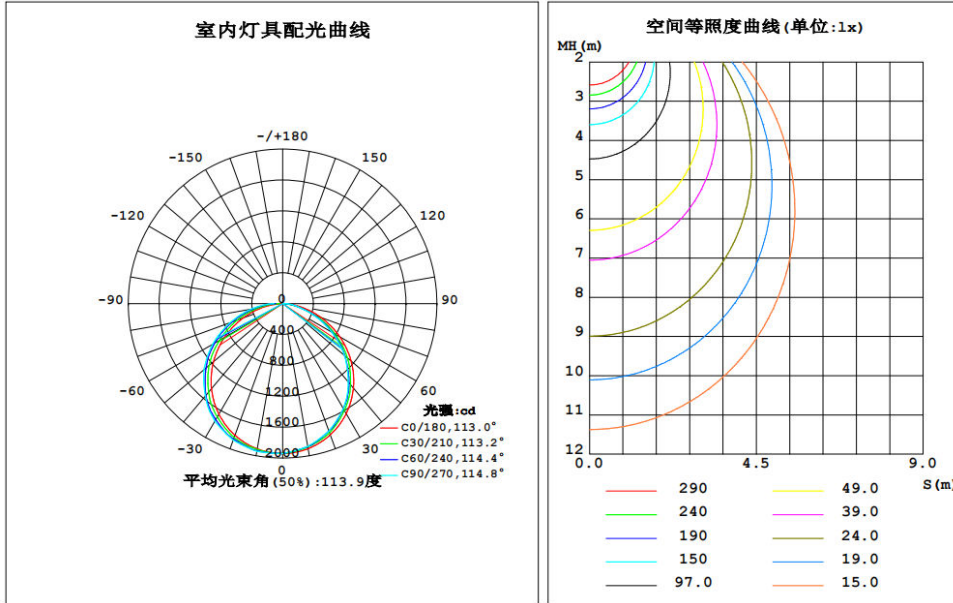
NSLL-30-40K



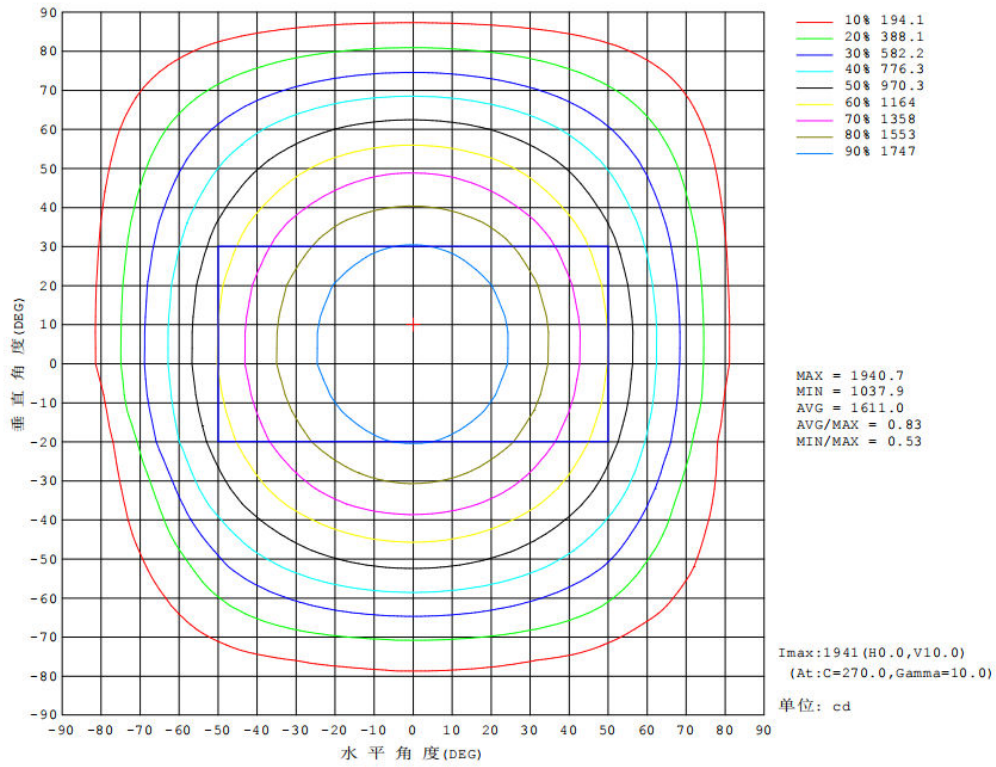
NSLL-60-40K



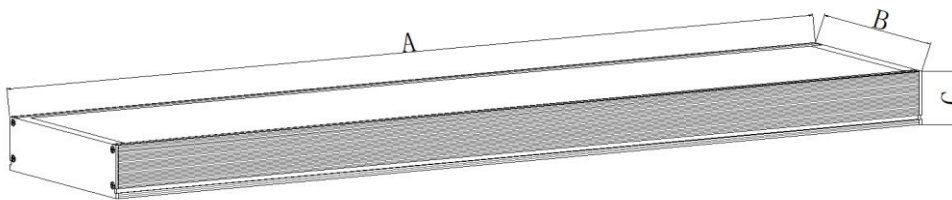
● Optical characteristic curve



高度	Eavg, Emax	光束角: 112.98度	直径
1m	572.4, 1940lx		302.05cm
2m	143.1, 485.0lx		604.10cm
3m	63.60, 215.6lx		906.14cm
4m	35.78, 121.3lx		1208.19cm
5m	22.90, 77.60lx		1510.24cm
6m	15.90, 53.89lx		1812.29cm
7m	11.68, 39.59lx		2114.34cm
8m	8.944, 30.31lx		2416.38cm
9m	7.067, 23.95lx		2718.43cm
10m	5.724, 19.40lx		3020.48cm



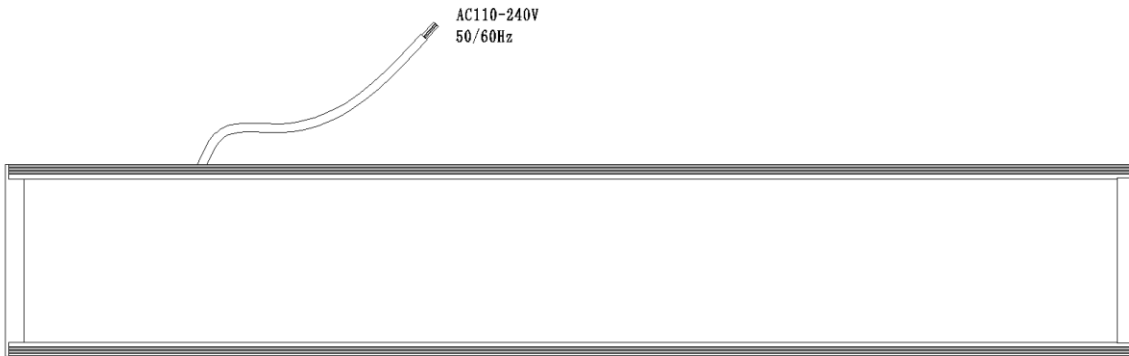
● Dimensions



Model	Diameter (mm)	A(mm)	B(mm)	C(mm)
10W	/	600±1	50±1	42±1
18W	/	1180±2	50±1	42±1
20W	/	600±1	100±1	42±1
30W	/	1180±2	100±1	42±1
60W	/	1180±2	200±1	42±1

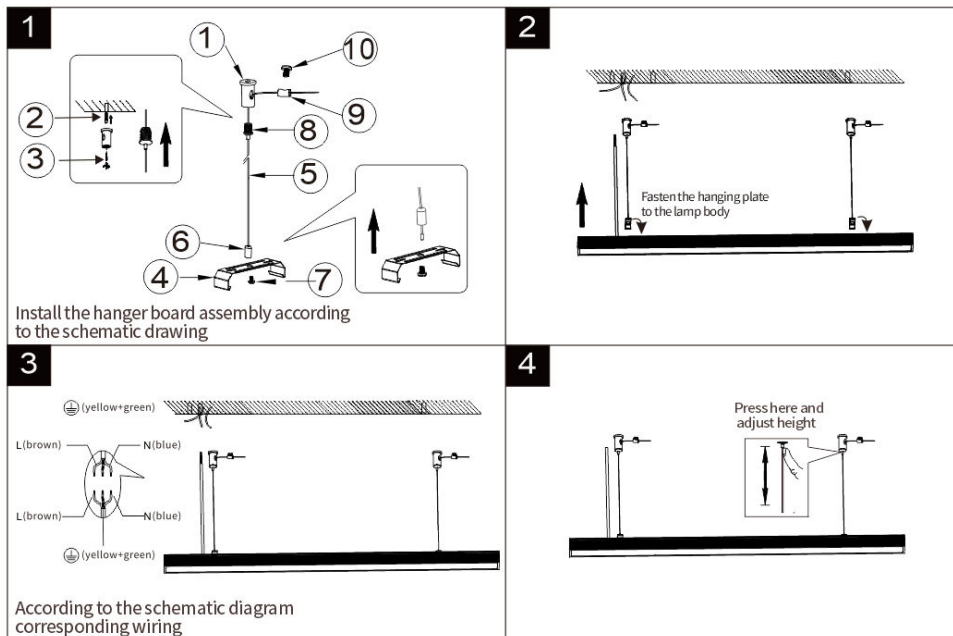
● Instruction of wiring

1. Diagram of power supply wiring:



● Installation Instructions (安装示意图)

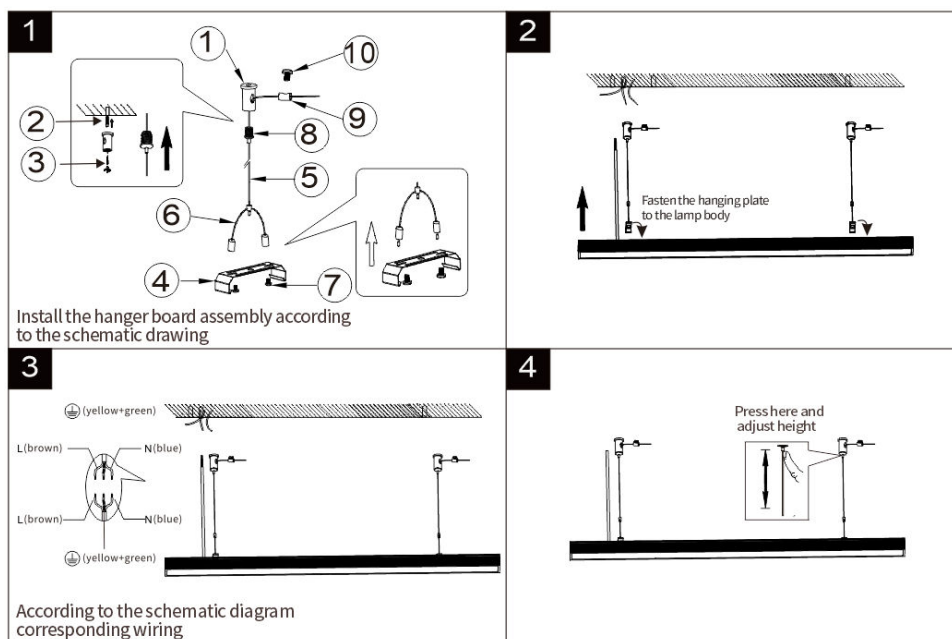
NSLL-10-40K/ NSLL-10-65K/ NSLL-18-40K/ NSLL-18-65K



1. The T iron is fixed to the top of the ceilings at a real distance;

2. Fasten the hanging plate to the lamp body;
3. According to the schematic diagram corresponding wiring;
4. Press here and adjust height;

NSLL-20-40K/NSLL-20-65K/NSLL-30-40K/NSLL-30-65K/NSLL-60-40K
/NSLL-60-65K

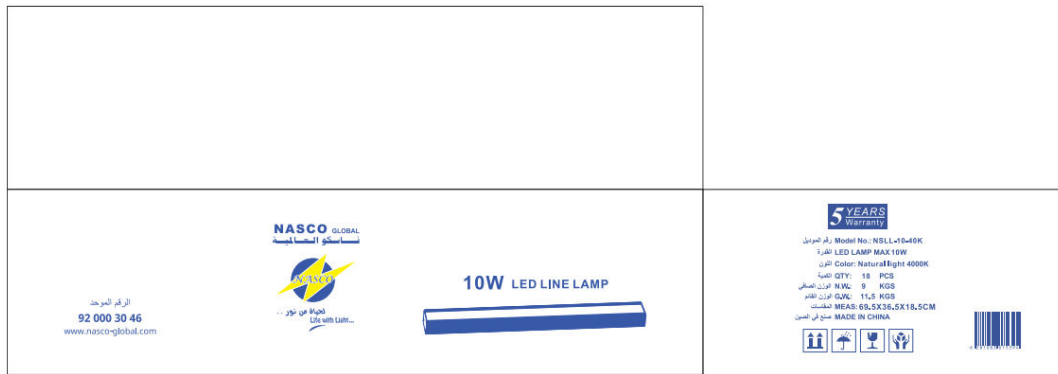


1. The T iron is fixed to the top of the ceilings at a real distance;
2. Fasten the hanging plate to the lamp body;
3. According to the schematic diagram corresponding wiring;
4. Press here and adjust height;

● Product Package

NSLL-10-40K

Packed in color box, 18 PCS/ Master carton



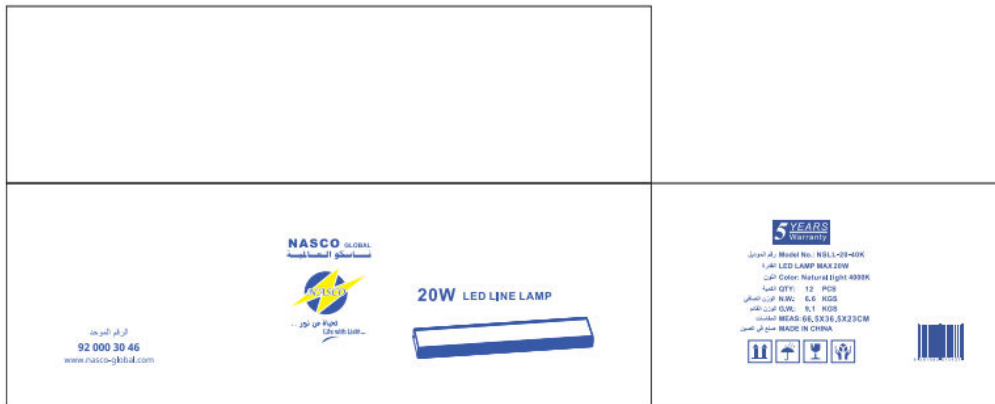
NSLL-18-40K

Packed in color box, 18 PCS/ Master carton



NSLL-20-40K

Packed in color box, 12 PCS/ Master carton



NSLL-30-40K

Packed in color box, 12 PCS/ Master carton



NSLL-60-40K

Packed in color box, 6 PCS/ Master carton



● Packing size :

Model	L (mm)	W (mm)	H (mm)
NSLL-10-40K	695	365	185
NSLL-10-65K	695	365	185
NSLL-18-40K	1275	365	185
NSLL-18-65K	1275	365	185
NSLL-20-40K	665	365	230
NSLL-20-65K	665	365	230
NSLL-30-40K	1245	365	230
NSLL-30-65K	1245	365	230
NSLL-60-40K	1240	365	220
NSLL-60-65K	1240	365	220

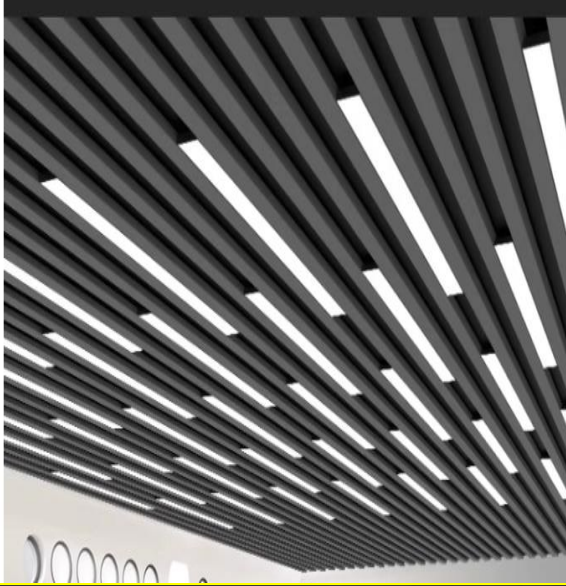
● Attentions

1. Make sure the power is off before maintenance.
2. Clean the glass of diffuser of lamp regularly to maintain good light transmittance.
3. Clean the dust of the shell to maintain good heat dissipation performance.
4. Be careful not to use water or corrosive solution for cleaning, it is better to use a dry cloth.

● Warranty and After-sales Service

The period of guarantee is 5 years. Quality assurance is based on the correct storage, installation, use and maintenance of products. Due to improper installation and improper use of the product, the product is damaged beyond the scope of this warranty. During the warranty period, We will choose to repair, replace (spare parts) with new products. Labor charges or material costs will be appropriately collected over the warranty period.

● Products Application Cases





The date listed in this file is for reference only, and the specific date should be subject to the specific products, if any change, sorry for no notice .